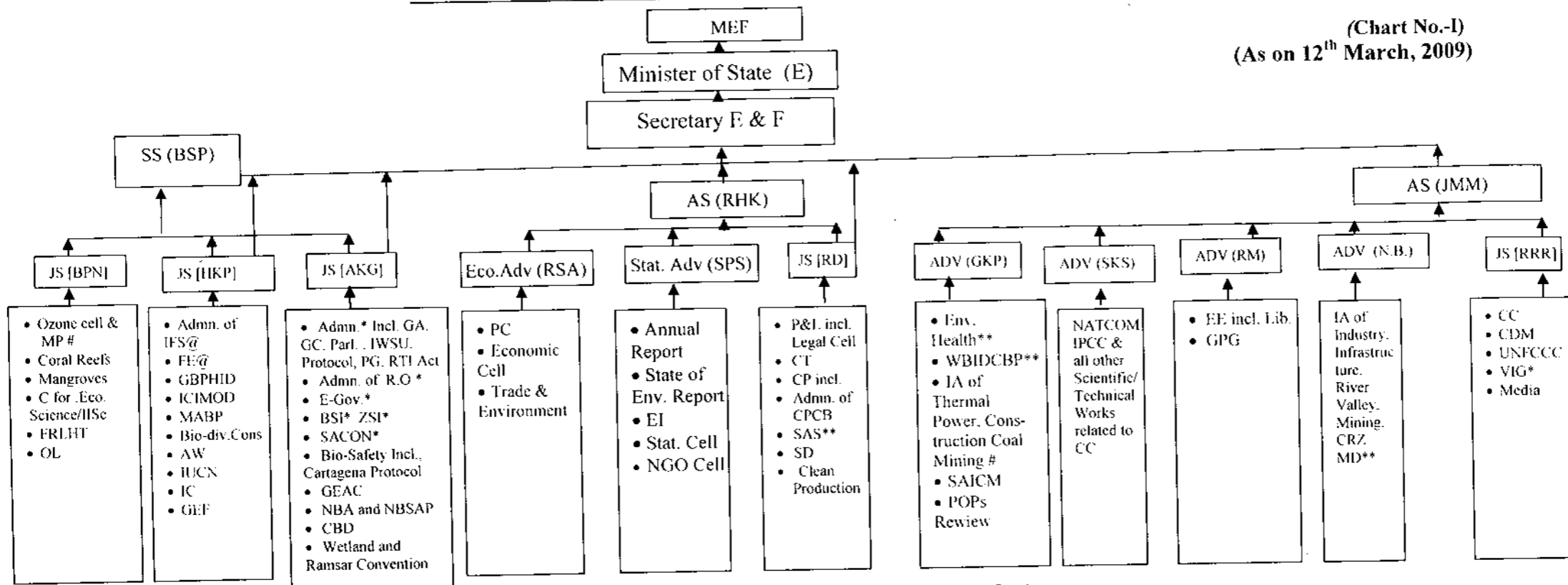


SECTORIAL ORGANOGRAM OF ENVIRONMENT SECTOR

(Chart No.-I)
(As on 12th March, 2009)



* This work will directly be submitted to the Secretary (E&F)

** Officers for this work will report to AS (RHK)

@ JS (JKP) will report to DGF&SS i.r.o. this item of work

Officers for this work will report to JS(JMM)

UNCCD: United Nations Convention to Combat Desertification

WBIDCBP: World Bank Industrial Development Capacity Building Project

SACON: Salim Ali Centre for Ornithology & Natural History

FRLHT: Foundation of Revitalization of Local Health Tradition

United Nation Framework Convention on Climate Change

EIVR: Entities of Incomparable Value Regulations

TBGRI: Tropical Botanical Garden & Research Institute

GEAC: Genetic Engineering Approval Committee

NBSAP: National Bio-diversity Strategy & Action Plan

CC: Climate change

IA: Impact Assessment

GC: General Co-ordination

ICIMOD: International Centre for Integrated Mountain Development

CPCB: Central Pollution Control Board

CBP: Capacity Building Project

SAS: Source Apportionment Studies

CBD: Convention on Biological Diversity

SD: Sustainable Development

CDM: Clean Development Mechanism

IGPP: Indira Gandhi Paryavaran Puraska

CP: Control of Pollution

PC: Plan Co-ordination

MABP: Man and Bio-sphere Program me

IC: International Co-operation

NATCOM: National Communication

IWSU: Internal Work Study Unit

NBA: National Bio-diversity Authority

AW: Animal Welfare

ZSI: Zoological Survey of India

BG: Botanic Garden

IFS: Indian Forest Service

MP: Montreal Protocol

RE: Research in Environment

GA: General Administration

PG: Public Grievances

BGIR: Botanical Garden of Indian Republic

IE: Environment Education

GBPHID: G.B. Pant Himalayan Institute of Environment Development UNFCCC:

GPG: Global Public Goods

CRZ: Coastal Regulation Zone

RE: Research in Environment

GEF: Global Environment Facility

VIG: Vigilance

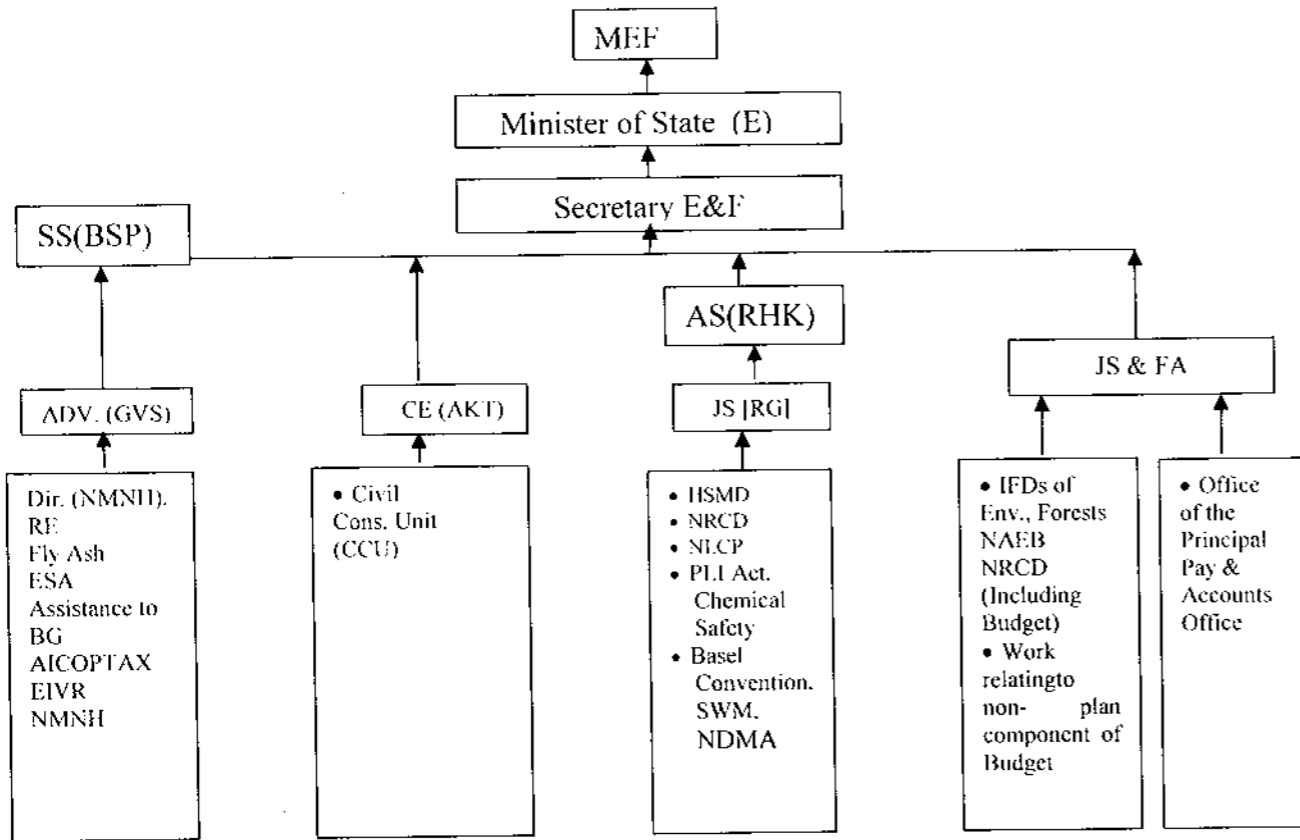
SAICM: Strategic Approach to International Chemicals Management

BSI: Botanical Survey of India

OL: Official Language

SECTORIAL ORGANOGRAM OF ENVIRONMENT SECTOR

Chart No. II
(As on 12th March, 2009)



NDMA: National Disaster Management Authority
 RE: Research in Environment
 IA: Impact Assessment
 CCU: Civil Construction Unit
 HSMD: Hazardous Substances Management Division
 IFD: Integrated Finance Division
 PLI: Public Liability Insurance

SWM: Solid Wastes Management
 ESA: Ecologically Sensitive Areas
 NLCP: National Lake Conservation Plan
 CRZ: Coastal Regulation Zones
 NAEB: National Afforestation and Eco-Development Board
 NRCD: National River Conservation Directorate